

Oracle Command Centers

Optimize operational decisions and improve process efficiency with real time data, fully integrated with your Oracle E-Business Suite

Key Benefits

- Identify top priorities and take action
- Quickly review large amounts of data in a summarized view
- Experience quick user adoption
- Deploy rapidly, with no change to the Oracle E-Business Suite database
- Improve data communication with support for a variety of visualizations and charts

Command Centers currently available:

- Financials
- Procurement & Projects
- Order Management & Logistics
- Manufacturing
- Asset Lifecycle & Service
- Human Capital Management (HCM)

PRIORITIES

- 1.
- 2.
- 3.

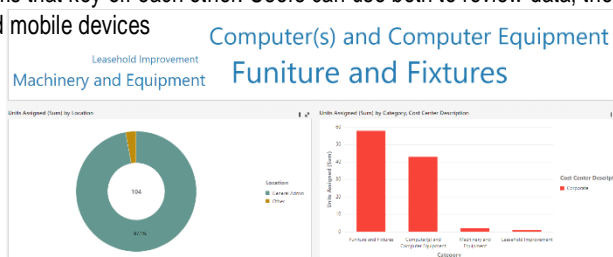
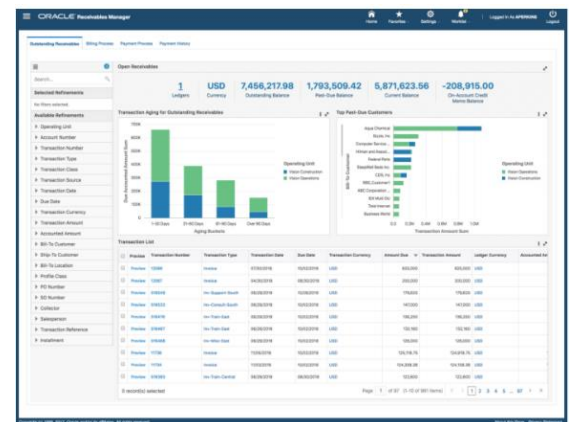


Overview

Oracle Command Centers are aimed at solving the problem of what users should prioritize and work on next. Included with Oracle E-Business Suite, Command Center dashboards enable information-driven navigation to help users focus on the right information, at the right time, to make the right decisions. By rapidly deploying out of the box dashboards, you are given access to operational reporting that may have required IT intervention to develop in the past.

Key Features

- Leverages your Existing Oracle E-Business Suite Investment
- No additional licensing
- Automatically follow existing security across modules
- Built in tools and visualizations such as actionable indicators, tag clouds, interactive charts, and search and filters.
- Interactive UI
- Discovery and transaction forms that key off each other. Users can use both to review data, then finally act.
- Available for both desktop and mobile devices



Prerequisites & Install

- Client is currently using, or planning to implement, Oracle EBS 12.2.4+
- Client server environment is on Oracle Linux 7+
- Potentially up to 28 Pre-requisite patches depending on installed modules
- Network Requirements:
 - Zookeeper Service running on port 2181
 - Oracle Enterprise Command Center Framework WebLogic admin server running on port 7775
 - Oracle Enterprise Command Center Framework WebLogic managed server on port 7776
- Client is currently using, or planning to implement, one of the areas command centers are current available in

